

LAND AT BROADHAYES FARM, STOCKLAND , HONITON, DEVON

(NGR ST 2316 0244)

Results of Archaeological Monitoring and Recording

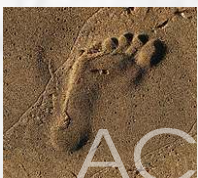
East Devon District Council Planning Reference: 18/2400/FUL
(Condition 3)

Prepared by:
Stella De-Villiers

On behalf of:
Bondstones Chartered Surveyors

Document No: ACD2063/2/0

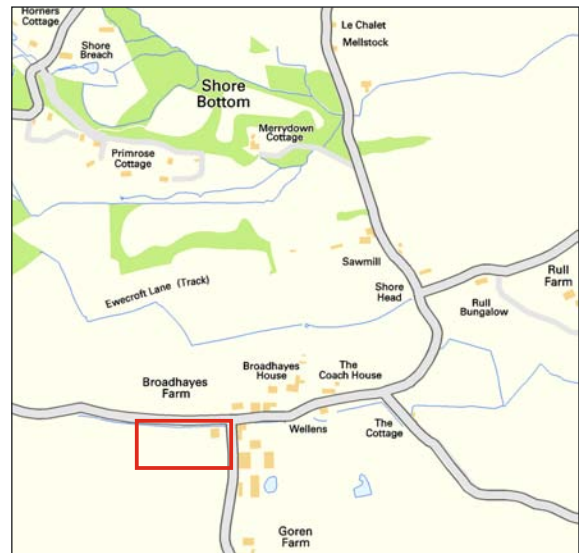
Date: October 2019



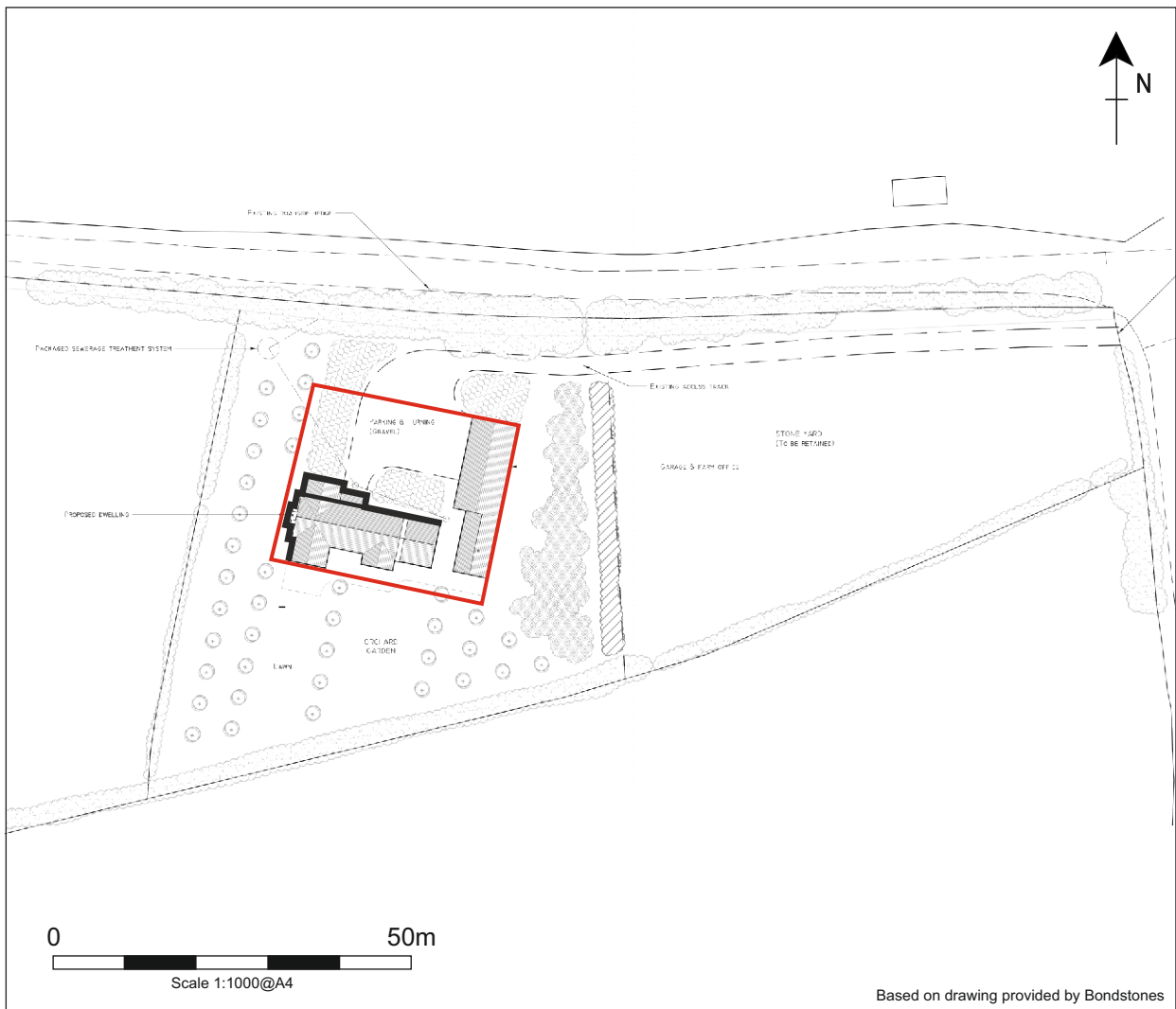
archaeology

Devon County Council Historic Environment Record

Civil Parish & District: Stockland, East Devon	National Grid Reference ST 2316 0244	Number:
Subject: Land at Broadhayes Farm, Stockland, Honiton, Devon		Photo attached Plates 1-3
Planning Application no: 18/2400/FUL	Recipient museum: N/A	
OASIS ID: 354148	Museum Accession no: N/A	
Contractor's reference number/code: ACD2063	Dates fieldwork undertaken: 2 October 2019	
<p>Introduction (Fig. 1)</p> <p>Archaeological monitoring and recording was undertaken by AC archaeology during groundworks associated with the construction of an agricultural workers' dwelling on land at Broadhayes Farm, Stockland, Honiton, Devon (ST 2316 0244). The site lies some 2.4km to the southwest of Stockland and to the south of an unnamed road extending east from Stockland Hill. It occupies part of a plot immediately to the west of Broadhayes Farm complex. This area, which was partially terraced, had been used for spoil and material storage.</p> <p>The site lies approximately 450m to the east of Stockland Great Castle scheduled monument. This comprises a large Iron Age hillfort bisected by the road extending between Broadhayes Farm and Stockland Hill to the west. The potential for prehistoric activity directly on the site had also been suggested by the record of a small number of worked chert pieces having been recovered. Broadhayes House comprises a Grade II* listed county house dating to the mid-18th century, with the site of associated grounds consisting of kitchen and fruit gardens, flower beds, tennis court and lawns having previously lain to the south of this. The current site, which lies to the west of the former associated grounds, lies in an area that is likely to have previously been used an orchard.</p> <p>Results (Fig. 1; Plates 1-3)</p> <p>Monitored groundworks comprised the removal of topsoil from the area followed by the excavation of footings trenches. These exposed the natural subsoil, which consisted of a compact silty clay containing very frequent angular flint nodules up to 500mm, at a depth of between 0.6m and 0.75m below existing levels. It was overlain by a 0.3m to 0.45m mid-reddish-brown silty clay subsoil, which was then sealed by a mid brown silty-loam topsoil.</p> <p>No archaeological features or deposits were exposed and no finds were recovered.</p> <p>Comments</p> <p>The results from the monitoring were negative with no archaeological features or deposits exposed. There was no evidence for activity associated with the nearby prehistoric activity or finds spots.</p> <p>This report represents the archive for the project.</p>		
Recorder: Stella De-Villiers, AC archaeology		Date sent to HER: 7 October 2019



Ordnance Survey © Crown Copyright 2019. All rights reserved. Licence number 100022432



Based on drawing provided by Bondstones

PROJECT

Land at Broadhayes Farm, Stockland, Honiton, Devon

TITLE

Fig.1: Location of site and monitored area





Plate 1: General view of site, looking west



Plate 2: General working view of excavated footings trenches, looking southeast



Plate 3: Representative section of footings trench, view to north (scale 1m)

Devon Office

AC archaeology Ltd
Unit 4, Halthaies Workshops
Bradninch
Nr Exeter
Devon
EX5 4LQ

Telephone: 01392 882410

Wiltshire Office

AC archaeology Ltd
Manor Farm Stables
Chicklade
Hindon
Nr Salisbury
Wiltshire
SP3 5SU

Telephone: 01747 820581

Fax: 01747 820440

www.acarchaeology.co.uk