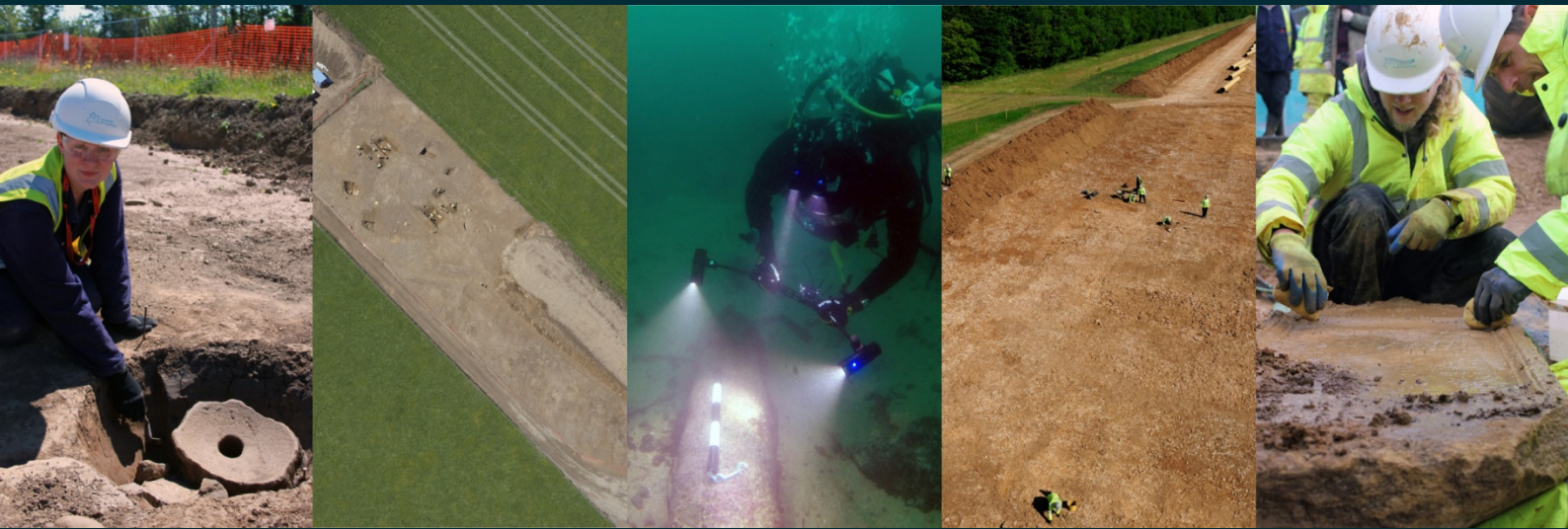


# Land at Meadow View Nursery Honiton Devon

*Archaeological Evaluation*

**Results summary**



for  
The Combe Estate

CA Project: 880249

October 2017



Land at Meadow View Nursery  
Honiton  
Devon

Archaeological Evaluation

**Results summary**

CA Project: 880249



Document Control Grid						
Revision	Date	Author	Checked by	Status	Reasons for revision	Approved by
A	17 October 2017	Jonathan Orellana	Derek Evans	Internal review	–	Derek Evans

*This report is confidential to the client. Cotswold Archaeology accepts no responsibility or liability to any third party to whom this report, or any part of it, is made known. Any such party relies upon this report entirely at their own risk. No part of this report may be reproduced by any means without permission.*

## CONTENTS

1.	INTRODUCTION.....	2
2.	ARCHAEOLOGICAL BACKGROUND.....	2
3.	METHODOLOGY.....	3
4.	RESULTS .....	3
5.	REFERENCES.....	5



## 1. INTRODUCTION

- 1.1 In October 2017, Cotswold Archaeology (CA) carried out an archaeological evaluation for the Combe Estate on land at Meadow View Nursery, Honiton, Devon (centred at NGR: 314074 099657).
- 1.2 East Devon District Council has granted planning permission (ref: 17/1053/MFUL) for the development of a garden centre at the site. Condition 5 of this planning permission requires a programme of archaeological work. The evaluation was undertaken in response to this condition. The evaluation results will inform the need for and scope of any further archaeological mitigation works which may be required at the site.
- 1.3 This document presents a brief summary of the evaluation results. A full report, including full illustrations and the results of analysis of the artefacts recovered from the site, will be issued in due course. The details given in this summary report should be considered preliminary and provisional, and are potentially due for revision once full analysis has been carried out.

## 2. ARCHAEOLOGICAL BACKGROUND

- 2.1 Previous archaeological investigations in advance of the construction of the A30 dual carriageway in the 1990s (Wessex Archaeology 1999a and 1999b) recorded a Mid to Late Bronze Age oval enclosure to the north of the Meadow View Nursery site. Two or three roundhouses were identified within this enclosure, as were several four-post granaries and a number of pits and hearths. The extrapolated line of the southern part of the enclosure enters into the Meadow View Nursery site.
- 2.2 The A30 works also recorded a broad linear feature interpreted as a natural hollow. The projected line of this feature runs through the eastern part of the Meadow View Nursery site.



### 3. METHODOLOGY

- 3.1 The evaluation was carried out in line with a Written Scheme of Investigation (WSI) produced by CA (2017) and approved by Steve Reed, Senior Historic Environment Officer, Devon County Council Historic Environment Team.
- 3.2 The evaluation fieldwork comprised the excavation of five trenches in the locations shown on the attached plan. All trenches were 15m long and 2m wide.

### 4. RESULTS

- 4.1 The natural substrate comprised small and medium-sized stones in a reddish brown silty sand matrix. It was encountered in all trenches at a depth of 0.3m–0.75m below the present ground level (bpgl).
- 4.2 It was clear that the northern part of the site has been extensively truncated. There is a pronounced step in site level running across the site centre on a north-east/south-west alignment. The section visible along this step was cleaned and recorded during the evaluation. This section shows that c. 0.4m of topsoil and subsoil has been removed from the northern part of the site and the underlying natural has been truncated by up to c. 0.45m. No archaeological features were observed in this section.
- 4.3 T4, in the south-western part of the site, had apparently also been truncated. Here, the natural substrate was exposed 0.3m bpgl and was sealed directly by a modern topsoil layer, which was partially lain on a membrane.
- 4.4 The ground did not appear to be truncated in the area of T2, T3 and T5. Here, the natural substrate was revealed 0.35m–0.55m bpgl and was sealed by subsoil and topsoil.
- 4.5 Archaeological features were identified in T1, T3 and T4. These trenches are discussed in more detail below.

#### ***Trench 1***

- 4.6 North-east/south-west orientated ditch 103 was cut into the natural substrate. This ditch was 2.1m wide; it was hand excavated to a maximum depth of 0.55m without

its base being reached. It had two undated silty fills (105 and 104). This ditch is in the location of the extrapolated continuation of the Mid to Late Bronze Age oval enclosure ditch recorded during the A30 archaeological works (see *Archaeological background*, above).

- 4.7 Ditch 103 was partially overlain by 0.1m thick silty subsoil layer 102, which was overlain in turn by 0.8m of modern made ground/surfacing deposits (101 and 100).

### **Trench 3**

- 4.8 North-west/south-east orientated feature 303 was cut into subsoil layer 301 and sealed by 0.25m of modern topsoil. This feature was 4.2m wide and 0.27m deep. It contained a single silty fill (304), from which modern ceramic material was recovered. This feature was on the line of the probable natural hollow recorded during the A30 archaeological works.

### **Trench 4**

- 4.9 Four pits and a ditch were identified in T4. These features were cut the natural substrate and were sealed directly by modern topsoil 400, which was partially laid on a membrane.
- 4.10 Shallow north-west/south-east orientated ditch 402 was 0.28m wide and 0.2m deep, with a single undated fill (403).
- 4.11 Circular pits 404 and 406 were identified to the north-east of ditch 402. These pits had moderate sloping sides and bowl-shaped profiles. Pit 404 measured 0.35m in diameter and 0.09m in depth. Pit 406 measured 0.4m in diameter and 0.14m in depth. Both pits contained undated single fills (405 and 407).
- 4.12 Sub-oval pit 408 was 0.48m wide and survived to a depth of only 0.04m. A relatively large amount of prehistory pottery was recovered from its single fill (409), which also contained frequent charcoal flecks and fired clay.
- 4.13 Oval pit 410 was 0.68m long, 0.6m wide and 0.15m deep. No finds were recovered from its single fill (411).



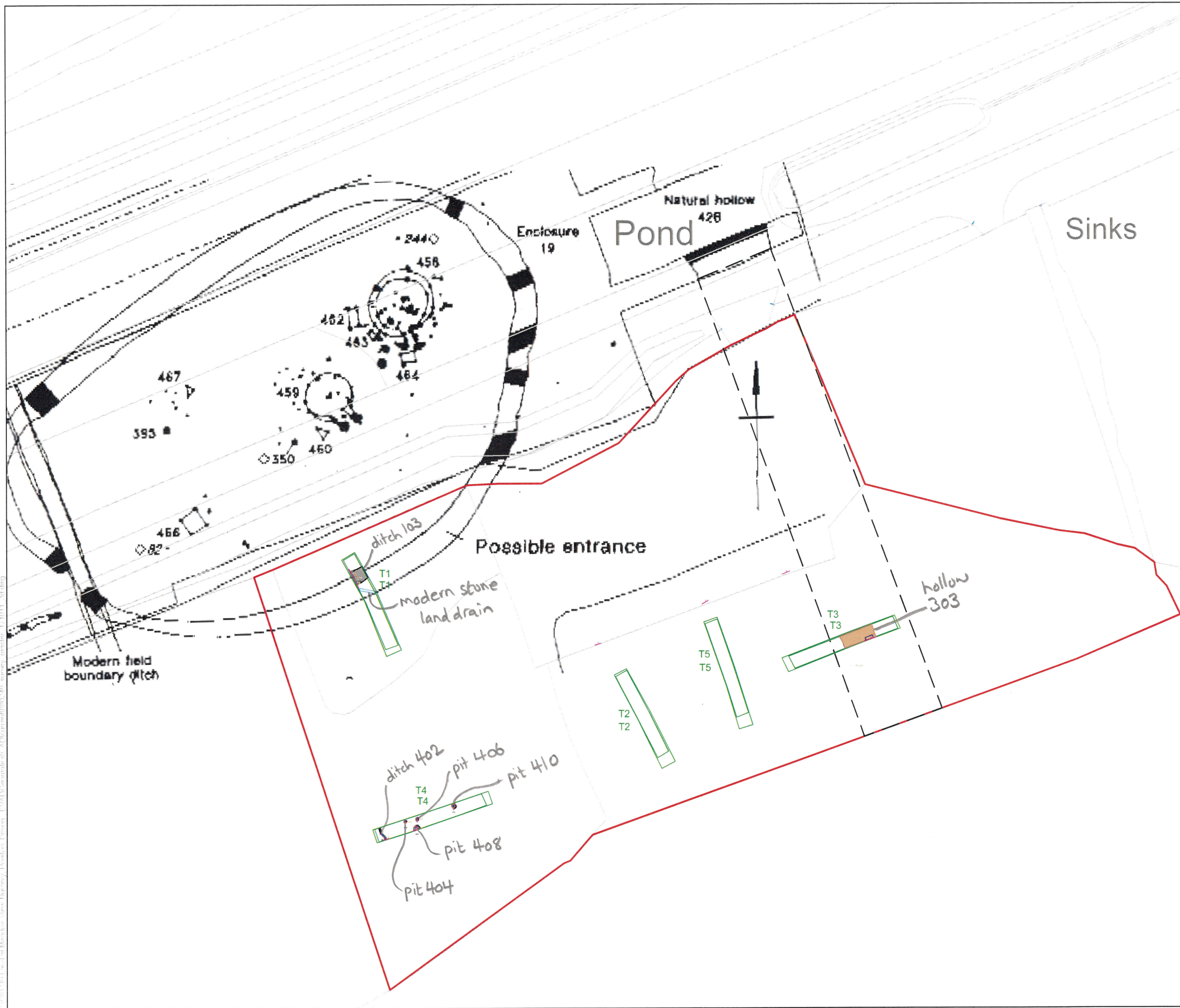
## 5. REFERENCES

Cotswold Archaeology 2017 *Land at Meadow View Nursery, Honiton, Devon: Written Scheme of Investigation for an Archaeological Evaluation*

Wessex Archaeology 1999a *Prehistoric & Roman Sites in East Devon: the A30 Honiton to Exeter Improvement DBFO Scheme, 1996-9, Vol 1: Prehistoric Sites* Wessex Archaeology Report No. **16**

Wessex Archaeology 1999b *Prehistoric & Roman Sites in East Devon: the A30 Honiton to Exeter Improvement DBFO Scheme, 1996-9, Vol 2: Romano-British Sites* Wessex Archaeology Report No. **16**





- site boundary
- proposed evaluation trench
- projected line of ?natural hollow
- evaluation trench/excavation area
- excavated intervention
- cut feature
- natural (incl. topsoil/subsoil/geological/bioturbation)



Reproduced from the Ordnance Survey digital mapping with the permission of Ordnance Survey on behalf of The Controller of Her Majesty's Stationery Office © Crown copyright Cotswold Archaeology Ltd 100002109.

**Cotswold Archaeology**

Andover 01264 347630  
 Cirencester 01285 771022  
 Exeter 01392 626185  
 Milton Keynes 01908 564660  
 www.cotswoldarchaeology.co.uk  
 enquiries@cotswoldarchaeology.co.uk

**PROJECT TITLE**  
 Land at Meadow View Nursery, Honiton, Devon

**FIGURE TITLE**  
 Survey update showing results of adjacent excavation (Wessex Archaeology 1999)

DRAWN BY	JB	PROJECT NO	880249	FIGURE NO
CHECKED BY		DATE	11/10/2017	
APPROVED BY		SCALE@A3	1:500	<b>01</b>

Cotswold Archaeology Ltd, Meadow View Nursery, Honiton, Devon, EYA100002109, survey number: 171011\_3d.dwg



#### **Andover Office**

Stanley House  
Walworth Road  
Andover  
Hampshire  
SP10 5LH

t: 01264 347630

#### **Cirencester Office**

Building 11  
Kemble Enterprise Park  
Cirencester  
Gloucestershire  
GL7 6BQ

t: 01285 771022

#### **Exeter Office**

Unit 53  
Basepoint Business Centre  
Yeoford Way  
Marsh Barton Trading Estate  
Exeter  
EX2 8LB

t: 01392 826185

#### **Milton Keynes Office**

41 Burners Lane South  
Kiln Farm  
Milton Keynes  
Buckinghamshire  
MK11 3HA

t: 01908 564660